

Formed by like-minded residents who love Dunchurch and its heritage and wish to protect and enhance its environment in order to make the village a better place to live in, work in and visit.



FRIENDS OF  
DUNCHURCH  
SOCIETY (FODS)

## DUNCHURCH IN BLOOM



BRITAIN IN BLOOM UK FINALIST  
with the RHS

2019 GOLD AWARD



RUGBY IN BLOOM  
COMMUNITY  
CATEGORY



RUGBY IN BLOOM  
WAR MEMORIAL  
CATEGORY



HEART OF ENGLAND  
IN BLOOM  
LARGE VILLAGE



FINALIST FOR 2020



SEAN LAWSON AWARD FOR  
OUTSTANDING CONTRIBUTION  
TO RUGBY IN BLOOM



HEART OF ENGLAND  
IN BLOOM  
CATEGORY WINNER



HEART OF ENGLAND  
IN BLOOM OUTSTANDING  
ACHIEVEMENT



# FRIENDS OF DUNCHURCH SOCIETY'S *Guide to producing A Wildlife Friendly Garden*

A simple guide and tips for planting and maintaining plants to preserve our local biology and ecology and make a 'nature friendly garden'.





# *Enjoy your garden and it's wildlife*

All gardens and outside spaces have potential for encouraging wildlife, and to help you to create an area with flowers and shrubs that will attract and aid wildlife,

Friends of Dunchurch Society have compiled this short guide.

We hope you will find this booklet helpful!

## *Index*

- 1. Ideas*
- 2. Managing our environment*
- 3. Encouraging wildlife*
- 4. Choosing a container*
- 5. Weed killer, compost and peat*
- 6. Water conservation*
- 7. Children in the garden*
- 8. Tree & shrub planting*  
*Pollution management*

The Friends of Dunchurch Society are working with the  
Royal Horticultural Society and the Wildlife Trusts.

Produced by FRIENDS OF DUNCHURCH SOCIETY  
Gardening group 2021  
[WWW.FRIENDSOFDUNCHURCHSOCIETY.ORG](http://WWW.FRIENDSOFDUNCHURCHSOCIETY.ORG)



# 1. Ideas

*For Making your garden Wildlife friendly*



The suggestions in this booklet will, we hope, help you to create an eco/bio friendly environment for your local wildlife. The objective is to provide you with some ideas of what can be achieved with simple but good gardening practice and eco/bio conservation for a managed wildlife friendly garden.

Your garden can at all times and in all seasons of the year provide you with much pleasure.

***Borders*** filled with flowering plants and shrubs, provide nectar rich foods for butterflies and bees as well as seeds, berries and cover for birds and small mammals.

***Trees and hedges*** offer roosting and nesting sites for birds and mammals, as well as valuable shelter and cover from the elements and possible predators.

***Ponds and water*** - Wet features can be a habitat and a source of drinking water for a variety of animal life from amphibians and invertebrates to bathing garden birds.

***Log piles*** can be places for a variety of animals and insects to live, feed and hibernate in, to breed and shelter.

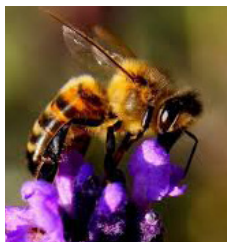
***Deadwood, trimmings*** and old foliage, fungi and moss provides cover for beetles.

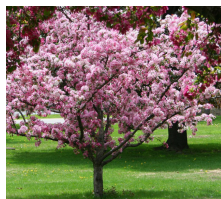
***Climbers growing up walls*** can provide somewhere safe to feed and breed.

***Feed for birds*** - prioritising bird feeders in your garden will attract a large variety of birds. Don't forget to clean the feeders regularly.

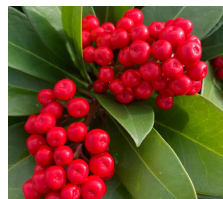
***Provide accommodation and shelter*** - Bird nesting boxes, Bat boxes, Hedgehog homes and Insect hotels to encourage local wildlife to visit.

***Growing containers*** - these can be a delightful addition to your garden and their plants, a source of pollen for butterflies and bees.





## 2. *Managing our Environment*



### *Choosing plants, trees and shrubs:*

Considerations for choosing plants are many and varied - here are some thoughts...

Choose indigenous plants and trees if possible - they like our environment and will flourish.

Drought tolerant - some plants require more water than others.

Sun/Shade - plants are sensitive to light - some enjoy shade.

Insect, bee and butterfly friendly - plants to provide pollen should be part of every garden.

Colour scheme - choose the colours you like.

Show/Display - plant to provide a lovely garden display for all seasons.

Size - all sizes of plants can produce a wonderful display.

### *Sun or shade?*

Plants are sensitive to sun and shade. Before buying consider the proposed location of your planting.

For advice about sun loving/shade loving plants, your local nursery can advise you.

Research about this on the internet is most rewarding and a nice start to planning your planting scheme.

### *Drought tolerant:*

Some plants can thrive with very little water. If you have concerns about watering, avoid thirsty plants (see water saving section).

### *Consider wildlife:*

You will be planting to improve your environment.

In addition to introducing some wonderful variety in colours and shapes you can also provide an environment that will help wildlife, bees, butterflies and insects - all so good for our environment.

### *Berry bearing shrubs:*

Can be useful for birds, particularly in the Winter months. Cotoneaster, Honeysuckle and Ivy are shrubs to be considered and are recommended by the Royal Society for the Protection of Birds as being useful sources of food for a wide range of birds.

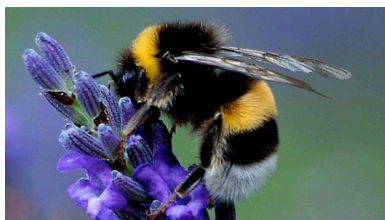
### *Show and display:*

Your planting will bring you such pleasure so consider the display value of any plants you purchase - don't be afraid to mix up the plants and colours.

Check the flowering dates to ensure colour for all seasons.

### *Plants to encourage birds, butterflies & insects:*

Catmint, Aubretia, Primrose, Honeysuckle, Lavender and Scabious.





### 3. Encouraging Wildlife into your Garden



These are some of the aspects you might want to consider to encourage Wildlife into your garden and will provide places to feed, breed and shelter.

Bees and butterfly friendly flowers  
Fruit trees  
Berry bearing bushes  
Insect hotels  
Nesting houses (solitary bees)  
Nesting boxes  
Bird feeders

Bat boxes  
Pond (wet area)  
Bird boxes for our local birds - sparrows etc.  
There are several types to provide for local species  
Bird bath - drinking, water provision, such as a bird bath is as important as providing food.  
Log store bug sanctuary

*Wildlife support houses & hotels handmade in Dunchurch from recycled materials now available*

#### **HAVE A WILDLIFE FRIENDLY GARDEN WHERE YOU LIVE!**

Perhaps if we all have wildlife eco homes in our gardens it would be very interesting for us, our families and help our village wildlife.

Private Gardens represent half of wildlife habitat in the UK.

*Our wildlife needs help from us*

Bees, hedgehogs and sparrows are all in decline and by considering them when planting our flowers and shrubs we can help them.

We have been working with Phill Freeman, who has now produced a wonderful range of wildlife eco homes from recycled wood. They are designed to help local wildlife flourish and will provide a good home as well as an attractive feature for our gardens.

*Available to order now!*

Phill's Eco Homes - all ready to go!

Single Bird Box - £5

Small Hexagon Insect House - approx 23cm wide - £10

Large Bug Hotel on Post - approx 61cm x 46cm - £25

Hedgehog House - £25

Made by Phill, in Dunchurch to order from recycled timber.  
Phill can deliver to you, if local (social distancing to apply). He will even fix if you wish.

If you would like to have a Phill Freeman made Wildlife eco home, email Phill directly - [phillfreeman@talktalk.net](mailto:phillfreeman@talktalk.net)  
Phill's payment terms are cheque or cash on delivery.





*Hanging baskets*  
*Troughs*  
*Blooming barrows*

# 4. Choosing a plant container



*Window boxes*  
*Terracotta tubs & pots*



The list is endless...

If you have a small garden, patio or balcony, you may wish to consider using pots, hanging baskets and other movable containers.

## *Choice:*

There is a mind boggling choice of containers to choose from. Choose the container that fits in best with its proposed surroundings and the size of the plants you want to grow in it.



# *FODS Blooming Barrows:*

These are mobile containers that can be placed where they have greatest impact for residents and passers by.

FODS wheelbarrows have been converted to be used as plant containers, they will have drainage holes. Any wheelbarrow can be converted for this purpose.

They can be used to grow vegetables or salads (we call these mealbarrows), flowers or perhaps a herb garden.

For best outcomes the barrows need to be prepared to FODS water saving specifications (See water saving section).

The bottom of the wheelbarrow must have drainage holes.

The barrow container should be lined with recycled all wool garments/blankets (bottom and sides).

Recycled sponges laid to cover the bottom of the container.

All this before filling with the growing medium.

These measures will reduce the need for water.

## *Suitable planting:*

This is the grower's choice. There are no limitations - grow from seed or plug plants (young plants) or more fully developed plants.

## *Growing medium:*

Local topsoil mixed with 50% compost.

## *Location of barrow:*

Being compact and easily moved around you can try different locations and the barrow would be best placed where the grower and neighbours/community can most enjoy it.

Considering the aspect of the barrow will determine your choice of flowers.

South facing bright sunshine, shady or North facing - you can research best planting for each location.

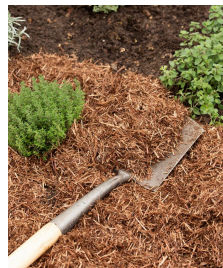
A full barrow will give the best display!





*Compost bin*

## 5. Compost growing mediums and fertilisers



*Mulch*

**Compost** is made with material such as leaves, shredded twigs, kitchen scraps and grass cuttings. To gardeners, compost is considered “black gold” because of its many benefits in the garden. Compost is a great material to mix with garden soil. Using peat is considered unfriendly to the environment. If you have room, start a small compost heap - grass cuttings can be the basis for this.

**Mulch** - A variety of materials are used as mulch. Organic residues: grass cuttings, leaves, hay, straw, kitchen scraps, coffee, shredded bark, whole bark nuggets, sawdust, shells, wood chips, shredded newspaper, cardboard, wool, animal manure, etc. Mulch is generally used to save water, suppress weeds and improve the soil around plants. Mulches help soil retain moisture in summer; it helps rain to penetrate the soil in winter; prevent weeds from growing and protect the roots of plants in winter.

**Local soil** is best used for raised beds. This approach takes local climate and environment into consideration for growing vegetables. Start with the easiest soil mix formula of 50% compost and 50% local top soil.

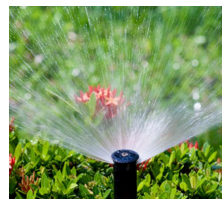
**Consider wildlife** - Best to avoid weed killer. Encouraging insects, birds and hedgehogs into the garden can help to eliminate the need for chemical weed killers.

**Bone meal** - Bone meal acts as a great fertiliser for a few key reasons. The first is that it's a great source of phosphorus, which is an essential nutrient for plants to help them flower and new plants to produce strong roots. Bonemeal is good for root vegetables such as onions, garlic, carrots and parsnips.





## 6. FODS Water Conservation



The increased emphasis in better management of the environment acknowledges the importance of issues such as climate change, pollution and human footprint. The drought of 2018 had a significant impact on many Britain in Bloom entries and also highlighted the need to address issues such as water conservation.

### *Saving water*

Three considerations in promoting better use of water:

- pots and container types
- plants and growing medium
- collecting and conserving use of water

### *Hanging baskets and plant containers*

It is most important to line a growing containers to prevent water loss and help with moisture retention. Hanging baskets dry out easily, stressing the plants living in them.

You can indulge in some recycling for this! Instead of buying moss which isn't very environmentally friendly, use an old wool jumper or blanket! Line your container with a black bin liner or a grocery bag and place the woollen blanket on top before filling with compost.

Be sure to poke drainage holes in the sides of the liner, so that water doesn't run straight through. Lining the container helps retain moisture by keeping the soil from drying out quickly, by placing old kitchen sponges at the bottom of the container it will help further with water retention. Plants take in water only as and when they need it, water isn't wasted, reducing maintenance requirements and creating better conditions for growth.

*Drainage* - Most important - water-logged containers do not produce good plants.

A layer of pea gravel on top of your recycled kitchen sponges should sufficiently separate water from plants.

*Collecting water* - water is such a valuable resource and with a little thought can be easily collected for use in your garden by installing a water butt.



## 7. Children in the garden



Most children enjoy helping out in the garden.

A set of child sized gardening tools will encourage their participation.

A good introduction to gardening would be to set aside a small corner of the garden for them to use or perhaps they could be given a container or pot.

### *Good starters for children:*

Planting Sunflower seeds , watering and watching them grow.

Planting in unusual containers such as old wellie boots can make things exciting for small children.

Choose fast growing plants, such as:

Morning glory

Sweet peas

Nasturtium

Marigolds

Poppies

Snap dragons



Growing a pumpkin from a seed.



An old wheelbarrow will also make a good container for a child to plant. Especially if it is used for vegetables or salad ingredients eg radishes, spring onions and lettuce, which can be picked to be included in family meals.

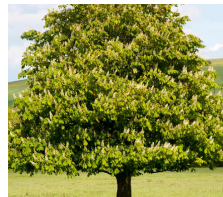
### *Allergens:*

Please check with your supplier that any plants to be used by children do not contain allergens that may cause an allergic reaction.





## 8. Tree & Shrub Planting



There has been a village at Dunchurch for at least 1000 years.

Part of its character is produced by the type of trees that grow here in our public spaces. It would be part of our recognition of our wonderful tree heritage to plant indigenous trees.

### *Filter out pollution*

RHS scientists and researchers have found that the shrub, Cotoneaster in your garden will improve your air quality. Also helpful in pollution removal are Hawthorne and Red Cedar. All of these can be used as hedges.

You may wish to consider one of the following, if you are thinking of planting a tree:

(Also, consider space - trees grow!)

*Chestnut*

*Oak*

*Walnut*

*Rowan*

*Cherry*

*Apple*

*Pear*

*Ash*

*Silver Birch*

*Beech*



100 year old Chestnut tree, Dunchurch

This booklet is just a guide.

More information can be found on the internet, on the RHS website [www.rhs.org.uk](http://www.rhs.org.uk) and at your local garden centre and also in the gardening section at our village library.

# Volunteers welcome!

If you have spare time and would like to join our friendly Gardening Group, who help to keep Dunchurch in Blooming condition. Please contact for more information

Sue Turner - Gardening Group Co-ordinator  
Tel: 07983 345381  
Email: pastures68@gmail.com



Some of our happy band of FODS Gardening Group.



FRIENDS OF  
DUNCHURCH  
SOCIETY (FODS)



## DUNCHURCH IN BLOOM

**FRIENDS OF DUNCHURCH SOCIETY VOLUNTEERS • FOR THE COMMUNITY, BY THE COMMUNITY**  
Planting • Litter pickers • Public Space Care • Neighbourhood Watch • Village Magazine • Facebook • Rugby In Bloom  
Village History Archive • War Memorials Care • Heritage • Dunchurch in Bloom • Members Newsletters • Website

### 2019 GOLD AWARD



RUGBY IN BLOOM  
COMMUNITY  
CATEGORY



RUGBY IN BLOOM  
WAR MEMORIAL  
CATEGORY



HEART OF ENGLAND  
IN BLOOM  
LARGE VILLAGE



SEAN LAWSON AWARD FOR  
OUTSTANDING CONTRIBUTION  
TO RUGBY IN BLOOM



HEART OF ENGLAND  
IN BLOOM  
CATEGORY WINNER



HEART OF ENGLAND  
IN BLOOM OUTSTANDING  
ACHIEVEMENT

